

New for 2012

**LEICHT®**



---

## PROGRAMMES

It is not simply the new fronts, colours or functions that are the spirit or the individual signature of the LEICHT Collection 2012. It is rather the interplay of many components that gives the kitchens their individuality and strong appeal. The unique and sophisticated front designs set LEICHT apart. Colours, decors and surfaces are of our times but look to the future at the same time.



### CHIARA-BG | KANTO-BG

Programme No. 285, price group 04 | Programme 827, price group K3

CHIARA (Italian for “the light, the clear”) is the name of our new attractive high gloss lacquer programme which is available in two white tones: 120 frosty white and 032 magnolia. A further attraction is that it is in price group 4. The addition to our FG-lacquer programmes is the laser applied high gloss plastic edge. The joint compared with a lacquered edge is visually unobtrusive. The reverse side is colour matching melamine covered. Surfaces KG, AG and FG are available for surround accessories.

Correspondingly, the programme KANTO-BG is also available in price group 3 in our KANTO-Collection. An identically constructed but a little more favourably priced programme version with conventional PU-bonded edging.

Available also in 120 frosty white and 032 magnolia.



### KANTO-PUR-FF | KANTO-PUR-FS

Programme No. 825, price group K3 | programme No. 831, price group K4

The extremely favourable response to our previous introduction of KANTO-PUR-FG has given cause to produce the programme now with integrated grip-profile in the versions -FF and -FS. Four current Collection colours are available.



### CARRÉ-FS

Programme No. 561, price group 04

A new programme with modern chic. The new CARRÉ-FS with a plain but angular accentuated frieze frame (68 mm) in silk matt lacquered style. It is loosely based on our successful programme CLASSIC-FS in texture and price and serves as a combination front specifically for planning timeless kitchens with classic flair.

CARRÉ-FS further provides an extensive range of design possibilities. From the smooth puristic planning with subtly included, stylish CARRÉ-fronts, to already established combinations with the FS-lacquered style components of our city-style surround accessories. Available in all FS-Collection colours and RAL-standards.



## FRAME-K | FRAME-H

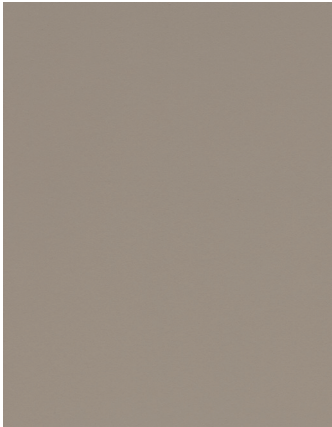
Programme No. 242, price group 04 | programme No. 241, price group 07

The new FRAME is the progressive starting point of our Collection 2012. With its 5 mm protruding and 2 mm thick stainless steel coloured metal frame profile, this is a sophisticated front with a defined contoured appearance. The surrounding slender framing gives the front, only 16 mm thick, the appearance of a painting. The contrast between the cool frame edge and the raw-to-the-touch veneer panelling of the FRAME-H in the new colours H 313h textured oak, copper and H 314h in textured oak, slate, is particularly ingenious. However, in combination with the melamine covered plain colours of the programme FRAME-K, a rather static picture emerges in which the narrow frame edges form a strong contrast, highlighting the background of the white colours K 100 arktis, K 120 frosty white and K 032 magnolia.

---

## COLOUR EXTENSIONS

The continuity of colours and decors, typical for LEICHT, covering many programmes, or even the variation in various price groups, offer the kitchen planner a good opportunity to experiment with alternatives. For instance, sand-grey, a new subtle natural tone has been added to several programmes, from laminate to lacquer. Furthermore, the new LEICHT Collection offers new and striking wood veneer fronts and decors with particularly beautiful, naturally matt – haptic – surfaces.



### 136 sand grey

Last year's popular colour is now also available as K 136 in the programmes TOCCO, AVANCE-RK-2 and as FF/FS 136 lacquer in KANTO FF/FS and KANTO-PUR-FF/FS.



### DI 352v rock elm

A slightly greying pronounced textured wood décor, however, with a manifold colour spectrum. Because of its fine mother-of-pearl pigmentation, it is almost pre-destined for use on the high gloss surfaces of the programmes AMICA and AVANCE-KG.



#### **KI 381v sycamore maple**

A plain, popular maple décor with a trendy velvet matt surface which will replace our KI 338 v maple in the programmes ORLANDO and AVANCE-KH.



#### **H 313h textured oak, copper**

Water based stain- and lacquer-system.

Available in TOPOS and the new FRAME-H. An unobtrusive rustic-type wood colour which reminds of the seventies with its colour-play of copper, cognac and havanna. The current trend of haptic surfaces is demonstrated by the matt lacquer and the grain-enhancing brushing of the veneer.



#### **H 314h textured oak, slate**

Water based stain- and lacquer-system

The timeless effect of this colour tone is colour co-ordinated with the cool characteristic of our new FRAME-H. The distinct grey-green tone of the veneer is reminiscent of surfaces faded or washed out with time that gives it a feel of everlasting, even archaic. The ancient, weathered look enhances the brushed and super matt feel of our surfaces.



#### **KH 239v karst oak (KANTO)**

A karst is an area in which surface water is sparse because of it draining away. This is the effect on the wood of this oak: compact, gnarled and twisted. We are picking up a trend with this décor, in which the customer's desire for authenticity finds its expression also in wood reproductions. Only available in the programme KANTO-KH.

---

## WORKTOPS

LEICHT is expanding the worktop range with the new ceramic worktops in nine different colours and designs, enhanced by surface-flush built-in ceramic sinks. Rear and side panels can also be supplied in this natural and hard wearing material. This material is used in the facings sector and also for laboratory furnishings. It is totally resistant to chemical and mechanical influences. In addition LEICHT offers surface-flush ceramic sinks from Villeroy & Boch in four different colours. Vivid rock decors with traces of use and a matt textured surface are highlights in the laminates. There are also additional quartz materials in the programme: a new décor, 12 mm thick tops and seamlessly built-under sinks with a stainless steel base.

---

## LAMINATE



**KH 239 karst oak** (LEICHT | KANTO)  
Authentic knotty reproduction.



**KH 381 sycamore maple** (LEICHT)  
Plainly grained and naturally matt.



**K 161 chalk** (LEICHT)  
Similar to 120 frosty white with new matt textured surface.



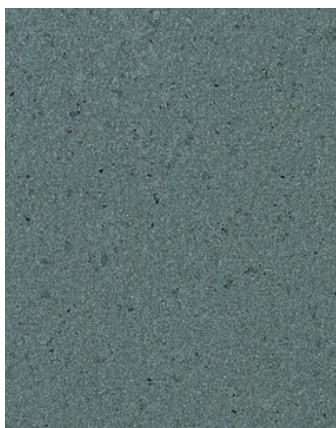
**K 162 clay** (LEICHT)  
Sand stone type with blunt rock surface.



**K 46 soap stone** (LEICHT | KANTO)  
Patinated soap stone with distinct traces of use.

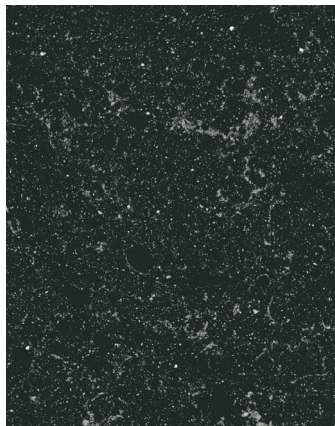


**K463 dolomite** (LEICHT | KANTO)  
A vivid rock in rusty Corten-steel look.



**K 469 portland** (LEICHT)  
Homogenously speckled with matt textured surface.

---



596 tunturi

A neutral, grey-brown base tone with round and cloudy rock inclusions.

AP C1/...

Additional quartz material worktop thickness 12 mm

Quartz material bowl

Processing type for seamlessly built-under quartz material sinks with stainless steel base.

---

CERAMIC

Nine colours available: 10 mm\*, 40 mm and 60 mm thick.

---



672 etoscha\*



673 algarve



674 canyon



679 atlas\*



680 altai



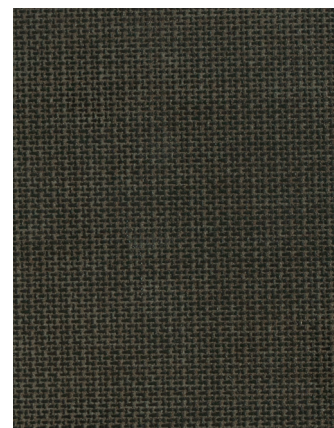
681 vulcano\*



682 arkansas\*



685 canvas\*



686 carbon

---

## SURFACE FLUSH CERAMIC SINKS

Order processing type for laminate worktops for surface-flush installation on site of the Villeroy & Boch ceramic sink "Timeline 60" and "Subway XM". To match V & B taps "COMO" and "COMO Shower".

Sinks and taps are listed in 4 colours:

690 V & B white alpine

691 V & B crema

692 V & B ebony

693 V & B graphite



Timeline 60



Subway XM

---

## HANDLES

Attractive ergonomic handle versions, new bow and bar handles together with interesting grip rails, integrated into the front or applied, provide the planner with new opportunities for enhancing kitchen fronts.



154.405 Knob (LEICHT)

"hand-friendly" knob for framed doors such as CARRÉ-FS, TAO or CASTELLO-2 FS.

Height 38, stainless steel colour.



391.405 Bow handle (LEICHT)

Unobtrusive, functional handle with rounded back and thin cross section.

Drill holes 160, height 28, stainless steel colour.

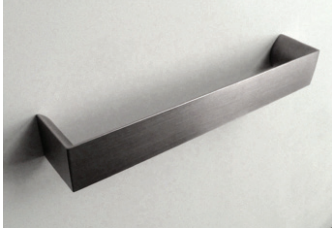


392.405 Bow handle (LEICHT)

Attractive handle with conical chamfered cross section. Mitred on the corners. Very suitable for modern frame programmes.

Drill holes 160, height 34, stainless steel colour.





**557.405 Bow handle (LEICHT | KANTO)**

Wide puristic-angular handle, semi-circular rear grip, very pleasant to grip. Suitable for all smooth fronts and for Miele electric appliances. Drill holes 160, height 31, stainless steel colour



**558.405 Bowhandle (LEICHT | KANTO)**

Handle with generous corner radii. Taking up the theme curve versus linearity. drill hole 192, height 28, stainless steel colour



**630.405 bar handle (LEICHT)**

A new modern bar handle with rectangular cross section. Position of handle horizontal only, matching the LEICHT front widths. Height 30, stainless steel colour

The standard bow handle 430.405 is derived from this with identical construction. Height 30, stainless steel colour.



**803.405 built-in griprail profile (LEICHT | KANTO)**

Horizontal griprail, inserted into the edge, matching all LEICHT front widths. Because the handle stretches over the whole front thickness, it can only be fitted into 19 mm thick fronts. Please observe programme limitations! Stainless steel colour

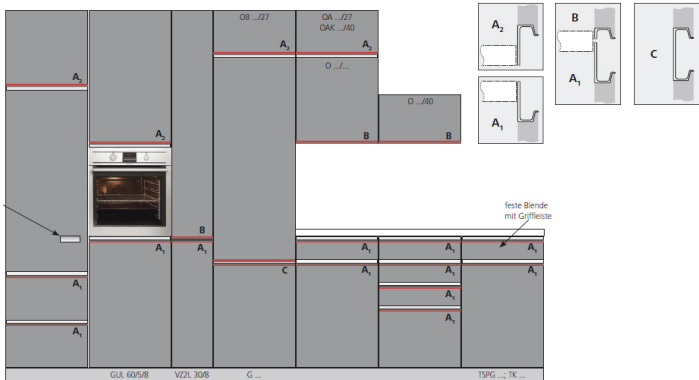


**810.405 griprail profile (LEICHT | KANTO)**

The stainless steel coloured griprail profile, applied to the front edge, is well placed in the range of handle-less opening systems. They can easily be used to achieve an AVANCE style appearance, for instance directly underneath the worktop with 80 high cupboards.



This griprail profile is also available stove enamelled as 809. ... in 032 magnolia, 100 arktis, 120 frosty white, 136 sand grey and 139 lava.



Three profiles are available for all conceivable door combinations and situations:

- A<sub>1</sub>** on the top edge of doors, drawers and pullouts in the floor unit area
- A<sub>2</sub>** on the bottom edge of midway units
- B** on the bottom edge of wall unit doors-, lift-up doors etc.
- A<sub>1</sub> & B** combined on tall units, tall housing units when doors are opened separately
- C** with composite doors

## CUPBOARD MODULES | FURNISHING

LEICHT sets new standards with exclusive cupboard types to the theme "Storage space optimisation". At the same time interesting planning extras and cupboard variants are being introduced, which provide new opportunities for planning and comfortable room arrangement. The AVANCE-programme together with the KANTO Collection 2012 has seen the addition of a multitude of new cupboard types. Furthermore new surround accessory and shelf designs have also been added.



### Midway corner unit EE...

Midway module for designing corner situations which arise when floor units butt against a tall unit run. The cupboard can be opened with a folding door mechanism that needs very little space on the worktop. In contrast to the roller shutter cupboards, the front appearance of the tall unit run remains undisturbed.

Available in the widths 60 and 70 cm, for all programmes which can have width alterations. So as to make possible the connection to the adjoining tall unit, the worktop below has a corner connection instead of a blender for adjustment of the corner blender. The remaining space will then have a filler to the wall.

Please note: Not possible with a vertical inset handle or touch-opening mechanism.



### Cookware-Centre VT 90 and VT 60

The new cookware centre in 60 cm and 90 cm width for storing all kitchen articles which usually are stowed away in other cupboards or a storage closet. Among these are pots and pans, a wok and baking sheets, grids and the pizza stone, for which high compartments have been created. The upper interior space is for the orderly arrangement of cookware e.g. sieves, whisk, chopper as well as small pans which can be suspended from hooks. The vario-grates on the door hold lids and wire baskets.

The extendible and lockable work shelf (only with VT 90) for electric kitchen machines, with smaller machine utensils fitting into the interior drawer, are of particular interest.

An LED-light pack, consisting of two GLE linear lights, is optional for this cupboard.



### Suspended floor units

Today's kitchen architecture demands layouts which enhance and participate in the effect of generous and open living area designs. This has moved us to provide the opportunity of fixing floor units of 40 cm, 53 cm and 66 cm to the wall. The suspended appearance emphasises the lightness of the living room ambience and shows it in its entire dimension to full effect.



The appropriate floor units have been marked with a symbol and will be supplied with an upper and a lower support fixing via the processing type AN-TOSO.



### Washing machine housing W7MU...70

Requested repeatedly and now officially listed: a Washing machine housing unit 70 cm wide in 68 cm depth for form-matching integration of washing machines and tumble driers in kitchens. The washing machine stands uncoupled on a separate appliance plinth so as to minimise noise. For the remaining space, a fixed shelf is supplied for on-site fitting between the appliances.



### Single tall unit fronts

For various programmes single tall unit fronts are now available without extra charge. PINTA, SYNTHIA, CERES, CLASSIC-FF, CLASSIC-FS, LUNA, MEMORY, TOCCO, TALIA, TESEO, LARGO-FG. The handle positions are identical with those of 80 cm composite doors.

For the following programmes, because of possible warping, an additional charge is made for a front adjustment fitting: TAMOS, TAMOS color, TOPOS, TIMBER.



The possible tall units are marked with a symbol. On the order please mark the item type with an "E".

### Floor units

#### 120 cm doors – floor units

Width increase to 120 cm of the 66 and 80 cm T- and TS-floor units have a central post and shelf in all depths.

#### Sink waste disposal units

New sink-pullout-waste disposal units with 80 cm, 90 cm and 100 cm width. All sink-pullout-waste disposal units are now available with backs via the type extension "RU".

### Type extension AVANCE

Various new cupboard types are available for AVANCE

Floor units:

TSP 60/4 ZA, 90/4 ZA, 120/4 ZA, TSPG 60/5 ZA, 90/5 ZA, 120/5 ZA  
TSP 120 ZA, TSPG 120/8 ZA

Wall units:

O 40/53 A, O 80/53 A  
OSK 80/53 A  
O 100/53 A  
O 30 – 100/93 A

---

## KANTO type extension

Further cupboard types have been added to the KANTO LIST:

TS2 30 – 90/8 Z2  
OM 50/.. und OM 60/..  
EDTSP 90/8, TDE 90/8, TDE 105/8, EAP2 .. 90, EAP4 .. 90  
TEV 80/8, T 30/8 ZR  
T 100/8, TS2 100/8  
TSD2 100/8 Z2  
TSP 100/8 Z2  
T 100/8 Z2  
TSU 60/8 SO  
TSPG 100/8 Z2W  
OAK 100/40  
O 100/40, O 100/53, O 100/66 and O 100/80, OE 60/66 and OE 60/80, OE 65/66 and OE 65/80

---

## Surround accessories

### Single shelf units 28 mm

Glued adjustment shelf units in varying widths for a simpler installation. 28 mm thick, matching the form of our side panel shelf unit, e.g. bases and sides flush and optional rear wall with surrounding shadow blinder. When used as floor or tall shelf unit - with plinth legs, used as wall unit style always with back and wall fixing.

### Paneel 40 per m.

The wall elements of Paneel 40 will be available as per.m. type in future.

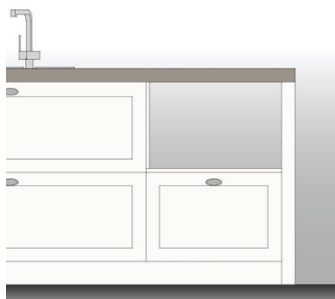
### Le Mans with click-fix

The Le Mans corner units will have clip-on and swing-out height adjustable shelves in the new Collection.

---

## Floor unit post

Simple floor unit post 6 cm x 6 cm FF/FS type for planning open compartments at the end of a run above mid-height floor units.



---

## Slide-away door cupboards with new fixing

The fixing technique of the slide-away door cupboards is being changed to the next generation with improved operating facility. The entire system has now been positioned in the side “pocket”. There is no longer a guide rail on the inside of the door or the covering caps on the inside of the carcass. The closing mechanism has been clearly optimised with the use of new hinges with spring tension.

New types have been devised on the base of the constructive alterations: HES, HEA...

A new version with the appliance combination dishwasher and oven/ steamer has also been added

---

## TECHNOLOGY

Technical developments and product improvements are a continuing process, ensuring that LEICHT kitchens comply with the latest standard. Thus there are new features on LeMans and with the slide-away-door cupboards. The hinge with integrated cushioning is being used throughout. LEICHT partners have been given a decisive advantage in the trade with the use of the innovative plasma-filter technique, originally developed for commercial kitchens. The new Collection contains several installation versions.



### Wall light WL.../PW WL...

In addition to the décor niche light, we now have a plainer, cubic light with movable light housing. It matches our niche system MODO in form and is easy to combine with. Available as wall light WL... in the lengths of 60, 80, 90, 100 and 120 cm and as panel light PW WL... in the lengths of 80, 90 and 100 cm. Stainless steel colour, brushed, light T5-tube, clip switch below on the light housing fixed to the wall, with central cable exit



### LED interior lighting IB LE

This light is a minimum complex solution for illuminating the Le Mans cupboards, carousel and other corner units. It is fixed in the rear corner and fitted with an integrated, movement sensitive, switch which activates the light for approximately 40 seconds on opening the door.

### LED-Sets

In order to increase the continuity of our LED-linear lights, we offer optional LED-Sets for illuminating some cupboard items. This refers to end cupboards (TAWR..., HAWR...), cookware (VT...), slide-away-door cupboards, roller shutters ERB and midway corner units.



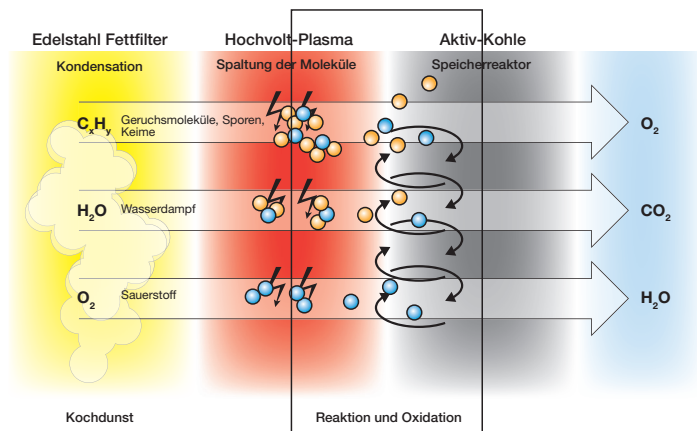
### Cushioned hinge

Since calendar week July 2011, we are using almost throughout a new hinge with integrated cushioning. This change was carried out smoothly. Here are the most important advantages of our new hinge:

- integrated cushioning in the hinge arm
- 3-step adjustment without tools
- larger opening angles on standard and wide-angle hinge
- increased depth adjustment
- height adjustment above worm drive
- no rebound effect on closing

## Plasma Filter technology

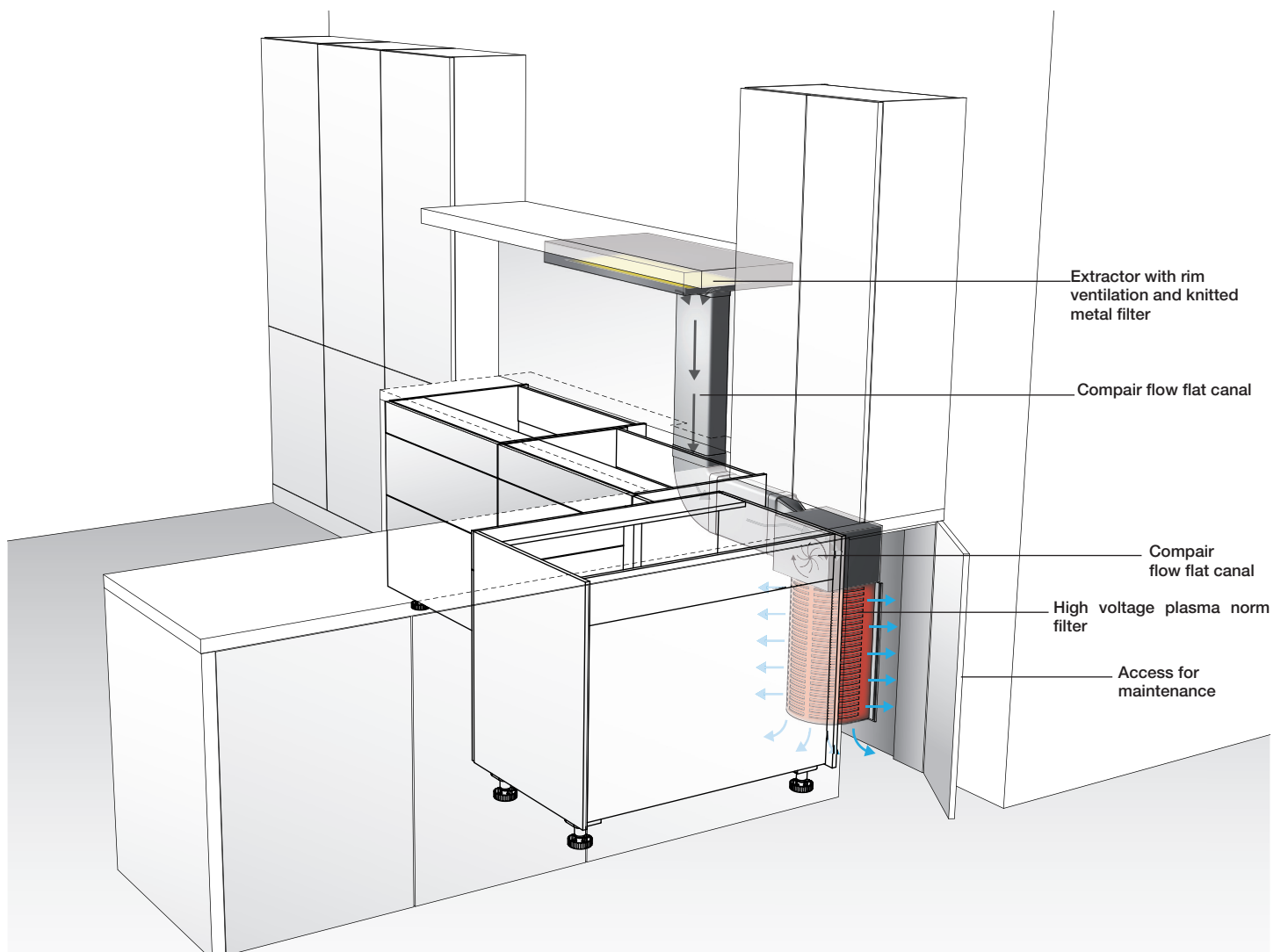
We are filling a niche with three different versions for highly effective air circulation cleaning to the principle of the Company O+F A-line. This will become very interesting with the background of ecological structural engineering guidelines. The plasma filter technology is particularly suitable when ducted facilities in low energy and passive houses cannot be used because of too high a loss of warmth. The plasma principle was developed for use in commercial kitchens and has also proved itself for many years in the largest fast food restaurant chains in the world. All solid and gaseous materials are entirely removed from the air. Thus the re-circulating extractors offer a true alternative for the first time.



The filter principle of O+F A-Line consists of the following three steps:

1. Removal and dehumidification by the conventional stainless steel grease filter.
2. High voltage-plasma treatment of the pre-cleaned air resulting in the disintegration and oxidation of the odour molecules.
3. Activated charcoal filter for removal and retention of all converted materials not covered in step 2.

Three special versions are available. Either the plasma filter unit with its complete technology located in the wall unit or integrated in a free-hanging Canopy. In a third version the connected upstream filter with rim ventilation in an only 6 cm thick board that can be fitted between wall- or tall units. The ducted air is fed behind the niche rear panel into the floor unit run with the integrated complete plasma filter unit for cleaning. This version is of particular interest with regard to the noise reduction.





LEICHT Küchen AG  
Postfach 60  
73548 Waldstetten  
Germany  
Phone +49 | 7171 | 402-0  
Fax +49 | 7171 | 402-300  
[www.leicht.com](http://www.leicht.com)